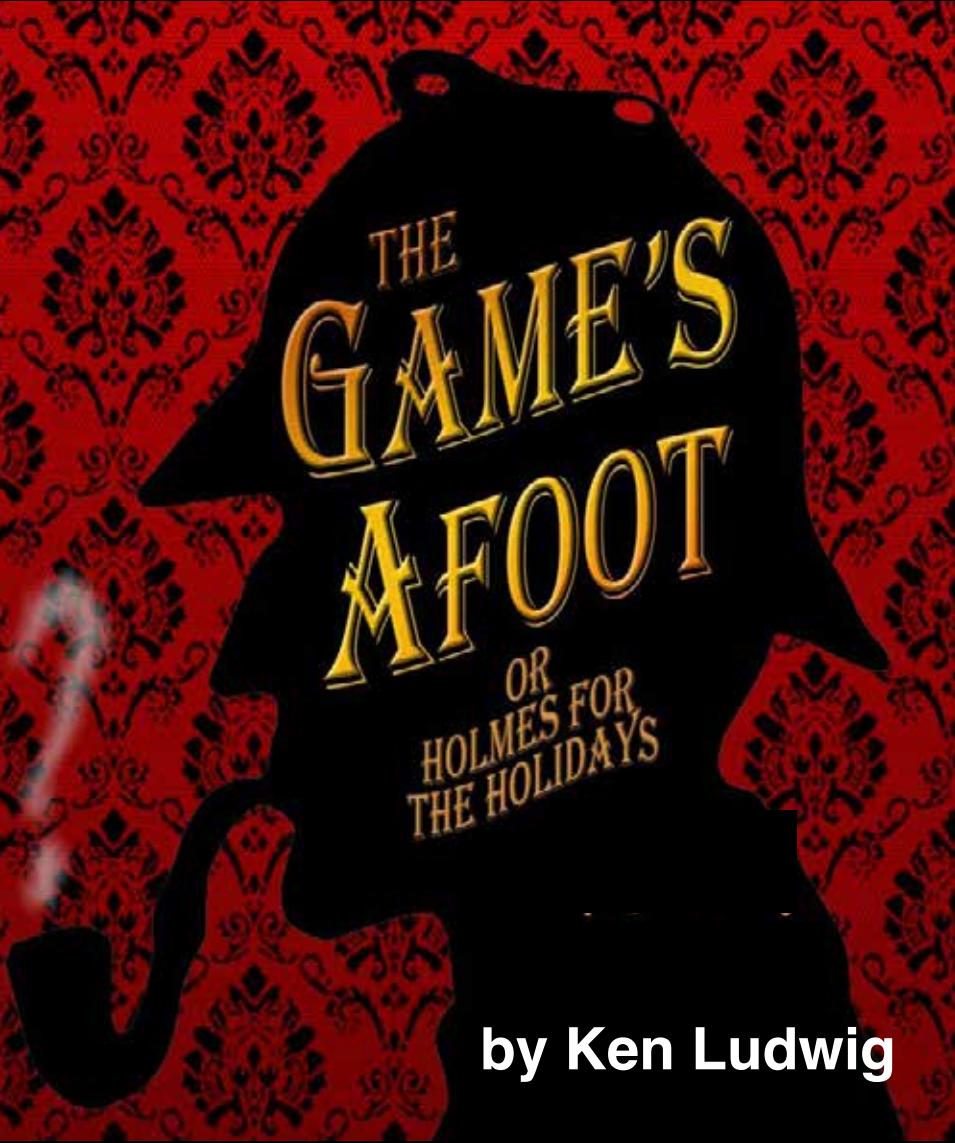


Main Street Players

presents



THE
GAME'S
A FOOT
OR
HOLMES FOR
THE HOLIDAYS

by Ken Ludwig

November 13-24, 2024

Join us DOWNTOWN



SHOP | DINE | EXLPORE

Food & Fun Before or After the Show

 DOWNTOWN
GRIFFIN



A Message from the Director

Who is Sherlock Holmes?

Sherlock Holmes is a fictional character detective created by British author Sir Arthur Conan Doyle. Referring to himself as a “consulting detective,” Holmes is known for his proficiency with observation, deduction, forensic science, and logical reasoning that borders on fantastic, which he employs when investigating cases for a wide variety of clients, including Scotland Yard.

The character first appeared in 1887. Over the course of his career, Conan Doyle featured Holmes in 56 stories, and 4 novels. Holmes' continued popularity led to much reimagining's of the character and adaptations over the years. *Guinness World Records* awarded Sherlock Holmes the title for “most portrayed literary human character in film and TV” in 2012.

What does The Game's Afoot mean?

William Shakespeare is not only known for his timeless dramas, but he is also equally famous for his use of language. Shakespeare coined, hundreds of words and phrases we use today, including “the game's afoot.” The saying first appeared in King Henry IV, Part 2, written in 1597. It gained popularity in the early 1900s with the widespread popularity of Sir Arthur Conan Doyle's famous character, Sherlock Holmes. And it did not truly make its way into everyday language until the detective television series aired in the mid-1950s. But what does it mean?

In a figurative sense, it means that something is beginning, something has started, or a challenge has begun. It is used to imply that something is starting to get exciting and interesting. In a literal sense, game refers to wild game, or animals you hunt. The phrase could be used to mean the hunt is on the move, or the animals are moving.

Is this a Christmas Play?

There are debates about what makes a Christmas movie or play. Some contend that Diehard is a Christmas movie, but It's A wonderful Life is not because Christmas is more central to the plot of the former, while the holiday makes only a cameo appearance at the end of the latter.

Using that logic, The Games Afoot or Holmes for the Holidays may not be a Christmas play. But there is a Christmas tree, decorations, and music. Salutations of “Merry Christmas” and presents. And this frothy fair is befitting of a very lighthearted, holiday celebration. Besides, associating this play with the holidays does allow for that particularly lame pun in the subtitle. So, who am I to quibble?

BJ Hughes

Director and Resident Scenic Designer

SETTING

A wharf in Connecticut

The living room of the mansion of William Gillette on the Connecticut River near East Hadden, Connecticut

TIME

December 1936

Act I

15-Minute Intermission

Act II

The Players *(In order of Appearance)*

William Gillette..... Steve Martin
 Martha GilletteKaren Beyer
 Felix Geisel.....Christopher Gansel
 Madge Geisel Heather Shepherd
 Simon BrightWill Pitts
 Aggie Wheeler Elise Wright
 Inspector Goring.....Carla Cloud
 Daria Chase..... Jill Shedd



Shattered Vision
Operators Grant
Program



115 North Hill St. Griffin, GA. 30223



Griffin DAILY NEWS



The Players



KAREN BEYER (Martha Gillette) played the role of “Mother” in MSP’s production of *Barefoot in the Park* and is delighted to return! She has worked in theatre for 40+ years; onstage at The Alliance Theatre, ART Station, Theatrical Outfit, Stage Door and Peachtree Playhouse as well as theatres in N.J. and N.Y. Offstage, she has directed and choreographed 50+ theatrical productions in GA. Some of her extensive credits in film and television include *Poms*, *The Resident*, *Queen Sugar*, *Acrimony*, *Naomi*, *Watchmen*, *Army Wives* and *Sleepy*

Hollow. Karen’s early dance career included study/performance with multiple East Coast ballet companies and competition in ballroom and disco. She and her husband, Bob, live in Sun City, where she is an assistant Tai Chi instructor and creates “Diamond Art by Karen.” Many thanks to BJ and the MSP family for another terrific opportunity!



CARLA CLOUD (Inspector Goring) just finished playing Grace in our season opener, *Grace and Glorie*. Other roles at MSP include M'Lynn in *Steel Magnolias*, Marjorie Baverstock in *The Musical Comedy Murders of 1940*, Alice Bordin in *The Tin Woman* and Marlafaye Mosley in the *The Savannah Sipping Society*. Originally from the Atlanta area, she has spent most of her adult life just over the state line in South Carolina, but has been back in this area since 2019. Having appeared on many different stages over the last 40+ years,

her two most favorite roles are Hilda in *Hilda’s Yard* and Alice in *The Tin Woman*. In addition to theater, Carla has experience in all areas of media including film, TV, and VO. She was the lead female in the faith-based film, “Waiting for Butterflies” and most recently played a supporting role in the upcoming movie, “Signs of Your Heart.” She’s also taught children’s theater and modeling. Currently she’s the founder and Managing Director of A Gentle Witness, a non-profit outlet for the writing and performing of monologues of biblical women. She firmly believes that God has a special plan for each individual and feels blessed that hers includes using her talents here at Main Street Players. She SO appreciates the love and support she receives from her husband, Vince.



CHRISTOPHER GANSEL (Felix Geisel) appeared last season as Leo Clark in *Leading Ladies* and Matthew/Jesus in *Cotton Patch Gospel*. Other roles at MSP include Ken de la Maize in *The Musical Comedy Murders of 1940*. Vanya in *Vanya, Sonia, Masha, and Spike*, the Man in *Now and Then*, Kris Kringle in *Another Night Before Christmas*, Watson in *Holmes and Watson* and C.C. Showers in *The Diviners*. Griffin audiences may also remember him as Gomez in Griffin Ballet Theatre’s production of *The Addams Family*. Other

favorite roles include Robert Kincaid in *The Bridges of Madison County*, Edward Bloom in *Big Fish*, Peter in *Jesus Christ Superstar*, and both Freddy and Lawrence in different productions of *Dirty Rotten Scoundrels*. Chris is a

two-time MAT Award nominee for his work as George Milton in *Of Mice and Men* and Dan Goodman in *Next to Normal*. He thanks the MSP family for making him one of their own.



STEVE MARTIN (William Gillette) has been part of MSP for many seasons. Audiences will remember him as Hector Nations in *Foxfire*, Dr. Evans/Dr. Watson in *Holmes & Watson*, Atticus Finch in *To Kill A Mockingbird*, Scrooge in *Christmas Carol*, the Agent/Sheriff in *Trip to Bountiful*, Jake Laurents/George Bailey in *It's a Wonderful Life - A Live Radio Play*, and Norman Thayer in *On Golden Pond*. He was born in Ohio and has lived in North and South Carolina, Alabama, and Georgia. Other stage experience includes Sir Toby Belch in Shakespeare's *Twelfth Night*. Film credits include an appearance as a featured extra in Tyler Perry's *Daddy's Little Girls* and the role of Swamp Robber in the children's DVD *The Swamp Robber* which premiered at the Fox Theatre in Atlanta. He is married with three grown daughters and their families. He thanks the Lord for the privilege of working with a great group of people to bring this play to life for people to enjoy.



WILL PITTS (Simon Bright) played Paul Bratter in *Barefoot in the Park* and Butch Meyers in *Leading Ladies* last season. He graduated from Gordon State College with an associate's degree in Theater Arts. He has had many lead roles throughout his career including Jesus (*Cotton Patch Gospel*), Trinculo (*The Tempest*), The Ghost of Christmas Present (*A Christmas Carol*), and Vlad Popov (*Anastasia*). Lisa Cesnik Ferguson, Patrick Horne, and Lori Bush provided his theater training. Will has won awards for his acting, singing, and pianist work. Some awards include first place at regional literary for Duo-Interpretation, second place at regional literary for Male Quartet, and 6 years of superior ratings from the National Federation of Music Clubs. He is also in a small-town local band called MOD 20. Will is extremely grateful for this opportunity and would like to thank his family, friends, cast, and Jesus for all they have done!



JILL SHEDD (Daria Chase) appeared as Meg Snider in *Leading Ladies* last season. Other roles at Main Street include Bernice Roth in the *Musical Comedy Murders of 1940* and Masha, in *Vanya, Sonia, Masha and Spike*. Favorite roles with other companies include the Ice Queen, Jadis, from *The Lion, the Witch & the Wardrobe*; Muriel, from *Dirty Rotten Scoundrels*; Sylvia from *The Women*; and Rona Lisa Peretti from *25th Annual Putnam County Spelling Bee*. But most significantly, she was able to perform as Francesca from *Bridges of Madison County* just as stages everywhere went black for the pandemic. She thanks the good Lord for talents and gifts, but more importantly, for an understanding husband who enjoys the performing arts.



HEATHER SHEPHERD (Madge Geisel) musically directed and played multiple roles in *Cotton Patch Gospel* last season. She is so glad to be on stage again here with her MSP family. This is her ninth show with Main Street- she sends her love to the whole cast and crew- they have been amazing to work with! Her last show with The Henry Players was *Next to Normal* which earned her a MAT award. She sends a huge thank you and love to BJ, Marian, and Norma for every opportunity to be a part of their family here. Shout out to her

bestie, friends and family, and the best bandmates ever. Greatest love and ultimate shoutout to her husband Paul, their children, and grands.



ELISE WRIGHT (Aggie Wheeler) is a Main Street Players regular. She just played Gloria in our season opener of *Grace and Glorie*. Last year she appeared as Corie Bratter in *Barefoot in the Park*, choreographed the show stopping number in *Leading Ladies*, played Beverly Nowak in *Miracle on South Division Street* and Shelby in *Steel Magnolias*. Previous roles at MSP include Helsa Wensel in *The Musical Comedy Murders of 1940*, Holly Burrell in *Foxfire*, Karol in *Another Night Before Christmas*, and Abby in *Now and*

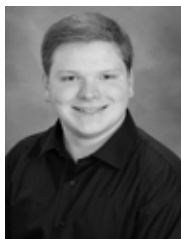
Then. Elise graduated from Lees-McRae College with a theatre arts degree and is currently working on her master's degree in arts administration at the University of Oklahoma. She is also grateful for everyone coming to support the arts!

Artistic Staff and Crew



JANICE AIKEN (Production Assistant) has helped behind the scenes on many MSP productions. Onstage performances include *War of the Worlds: The Panic Broadcast*, *A Trip to Bountiful*, *Inherit the Wind* and *To Kill a Mockingbird*. She was recognized by the GAAA Heart for the Arts as Main Street Player's Most Valuable Volunteer for the 2016-2017 season. Janice serves on our board and

has been volunteering for Main Street Players since the fall of 2012. She has been invaluable to our organization and has worked the Box Office, sold concessions, ushered, trained others to usher, answered the phones, helped clean the theatre prior to openings, worked set construction, repaired props and is an integral part of our Theater for Young Audiences program.



NATE BARNES (Lighting Designer/Lighting Technician) has been the Griffin Spalding County School System's Auditorium manager for the past eleven years. During this time, he has worked in both audio and lighting. Nate has experience in lighting and audio for several theatrical, ballet, and concert organizations. Nate also volunteers on the audio and visual team at Oak Hill Baptist. He is honored to work with MSP again and for the opportunities he has been given.



FRANK DANSBY (Master Carpenter) was Main Street's most valuable volunteer for the 2018-2019 season. He and his wife, Martha, are lifelong supporters of the arts and in particular theatre. They are active members at St. John Lutheran Church. Seven years ago, Frank joined Resident Scenic Designer BJ Hughes backstage at Main Street Players as a volunteer and quickly became a tremendous asset to the production team. Three years ago, he was added as Master Carpenter. Frank has worked on all productions since December 2017 for Main Street. With

his background as an airplane mechanic and owner of a small home repair business (Frank's Fix It Factory) plus his vast knowledge of DIY (do it yourself), he quickly noticed the construction techniques specific to theatre. With his construction and carpentry skills, he has allowed BJ to expand his vision of what our productions can look like, resulting in even more professional looking sets and scenery. Thank you, Frank, for being part of the Main Street family!!



BJ HUGHES (Resident Designer) is enjoying his fourteenth season with Main Street Players. He is even more delighted to be celebrating his 53rd anniversary in professional theatre during which he has worked as an actor, teacher, director, and designer. During his career he has produced, directed, and designed over 150 productions. BJ is originally from New Jersey. After obtaining a degree in theatre, he spent four years touring America in classical repertory before settling in Atlanta where for the next 30

years he acted, taught, and directed at the Alliance Theatre. He extends special thanks to Norma and Marian for inviting him to Griffin and providing a home with this creative theatre company.



KEITH POTTER (Stage Manager) appeared as the "out of breath delivery man" in *Barefoot in the Park* and was a musician (guitar) in *Cotton Patch Gospel* last season. This is his third season with MSP, serving as a volunteer in set construction, sound tech, stage management and stagehand work. He has been involved at MSP for the productions of *The Musical Comedy Murders of 1940*, *Tin Woman*, *Steel Magnolias*, *Miracle on South Division Street*, *Leading Ladies* and *Driving Ms. Daisy*. Prior to this, he had been involved in theater for many years while serving in the US

Army in Korea and Germany where he participated in productions of *Jesus Christ Superstar*, *Greater Tuna*, *A Funny Thing Happened on the Way to the Forum*, *Annie*, *Cyrano De Bergerac*, and *A Midsummer's Night Dream*. He loves collaborating with the staff and actors at MSP and is blessed to be able to take part in the magic that is The Main Street Players. He looks forward to a long adventure with MSP.



KAREN STANFORD (Production Assistant) has proved to be a versatile asset both on and off the stage to MSP. She was last seen as Luella Bennett in *The Diviners*. Other productions at MSP include multiple roles in *War of the Worlds: The Panic Broadcast*, *Charlotte's Web* as the Goose and Mrs. Dunlap in *Inherit the Wind*. She was honored as Main Street's Volunteer of the Year for the

2015-2016 season as she logged in over 150 hours of her time with set

construction. As a young lady, Karen was an avid participant in her high school's Thespian Club, as well as, performing in *Swingin' High* and *Meet Me in St. Louis*. She would also like to give a special thanks to her two children for their love and support.



NORMA RICHARDSON (Director/Artistic Director/ Costume Design) has been involved with theatre for most of her life and has appeared on several Atlanta stages, among others. As a director her credits include: *Cotton Patch Gospel*, *Miracle on South Division Street*, *Jacob Marley's Christmas Carol*, *Another Night Before Christmas*, *Hank Williams: Lost Highway*, *The Sweet Delilah Swim Club*, *The Mystery of Irma Vep*, *Honky Tonk Highway*, *Nunset Boulevard*, *Inherit the Wind*, *Titanic, the Musical*, *Tuesdays with Morrie*, *Every Christmas Story Ever Told*

(and *Then Some!*) in 2015 and 2019, *Mama Won't Fly*, and *Our Town*. On stage performances include *Foxfire*, *Now and Then*, *The Wild Women of Winedale*, *Fireflies*, *The Lion in Winter*, *The Sweet Delilah Swim Club*, *Southern Comforts*, *Driving Miss Daisy*, *Love Letters*, *The Little Foxes*, *The Guys*, *Steel Magnolias*, *Grace & Glorie* (2 times), and *Same Time Next Year*. Her career in television began with Turner Broadcasting/CNN. After leaving Turner, she was an Executive Vice President with Primerica and General Manager for their corporate television production department for over 20 years. She is a native of Griffin, Georgia and is the Founding Artistic Director of Main Street Players.



MARIAN SORENSEN (Associate Artistic Director) began her journey in theatre 54 years ago in a summer stock production of *Man of La Mancha*. She received a minor in Speech and Drama from LaGrange College but received most of her theatrical training at the Alliance Theatre School at the Woodruff Arts Center. While there, she was contracted as a teacher (her other passion) for both their youth and adult programs. She served as the Assistant Director of the School from 1981-1986. Marian has performed and/or directed on the stages at The Alliance

Theatre, Theatrical Outfit, Open City Theatre and Theatre in the Square. For MSP she has directed *Steel Magnolias*, *The Tin Woman*, *Foxfire*, *Now and Then*, *The Lion in Winter*, *The 1940's Radio Hour*, *A Tuna Christmas*, *War of the Worlds: The Panic Broadcast*, *The Dining Room*, *Driving Miss Daisy* (2011), *Grace and Glorie*, and *The Best Christmas Pageant Ever*. She would like to thank her husband, Neil, for his continued support.



SCOTT WELBORN (Sound Design and Technician) is making his debut with MSP, but he is no stranger to the theatre. He has worked with audio and lighting in a variety of theatrical and concert venues over the years and has found himself most comfortable behind the scenes with the technical aspects of the theatre, though there have been a few rare forays on the stage. Scott enjoys lending his talents where they are needed including volunteering on the Audio/ Visual Team at First Baptist Griffin and looks forward to whatever opportunities may come his way moving forward.



2024-2025 Season



September 18-29, 2024
by Tom Ziegler



November 13-24, 2024
by Ken Ludwig

I DO! I DO!



February 12-23, 2025
by Tom Jones, Harvey Schmidt

EXIT
LAUGHING



April 2-13, 2025
by Paul Elliott



June 11-22, 2025
by Neil Simon

Music, Comedy & Drama

Theatre that Entertains....Educates....Inspires

Performances: Wednesday-Saturday, 7:30pm & Sundays 3:00pm

Box Office 770-229-9916

Purchase individual show tickets on-line at www.mainstreetplayers.org by clicking on the ticket info and purchase tab or contact the box office.



Caldwell Cottage

ANTIQUES, INTERIORS & GIFTS

Wednesday - Saturday
10:30-5:30

Becki Brown

*A unique shopping experience provided
by local artisans and collectors.*

119 South Hill Street • Griffin, GA 30224
Call 678-201-7274

MM&B Dentistry

GRIFFIN • ZEBULON

770-227-9693

GRIFFIN

663 South Ninth Street
Griffin, GA 30224

ZEBULON

417 Plaza Drive • Pike Plaza
Zebulon, GA 30295

Griffin Providers

Dr. Jody Morgan
Dr. Chastity Brown
Dr. Kacie Burdette
Dr. Claire Meeks



Zebulon Providers

Dr. David Magusiak
Dr. David Lane
Dr. Emory Schroter
Dr. Brad Schmidt



Specialists



Dr. Paulomi Shah - Endodontics



Dr. Janet Hiers - Periodontics

www.mmbdentistry.com



Oakbridge

INSURANCE

325 South Hill Street
Griffin, GA 30224
770-228-8441



**Snider
Killingsworth**
INSURANCE & RISK MANAGEMENT

TERRY L. KILLINGSWORTH
tkillingsworth@sniderkillingsworth.com

678.408.6008 Direct
770.228.8441 Office
770.227.8025 Fax
770.815.2831 Cell



We believe a good bank
can be a good partner.

We want to be a positive force for good in our neighborhoods, whether we're sponsoring local events, lending money, supporting local businesses, or just encouraging you every time we meet.

This is a partnership, and we're in it for life.



fnbgriffin.com
HomeInNoTime.com

LARGEST DIGITAL AGENCY
SOUTH OF ATLANTA



Stone Soup Technology, LLC

www.stonesoup.tech

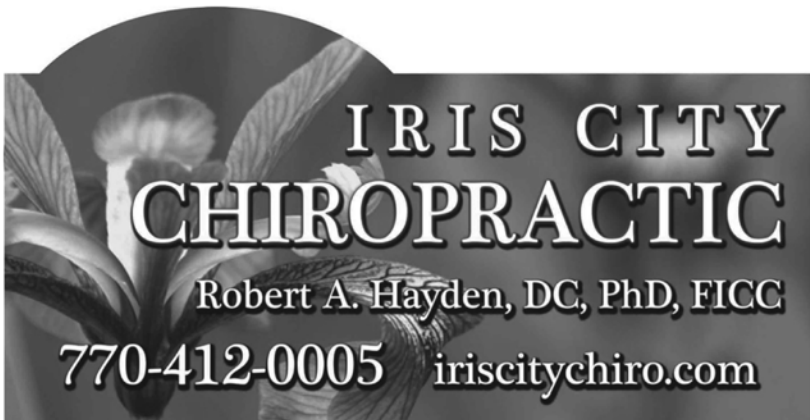
(770) 229-2253

mobile applications / website design / custom software

We are proud and happy to support
Main Street Players
in our hometown!

Diane B. Hayden, ASA, EA

Robert A. Hayden, DC, PhD, FICC



**IRIS CITY
CHIROPRACTIC**
Robert A. Hayden, DC, PhD, FICC
770-412-0005 iriscitychiro.com

Ars gratia artis... Semper gratia artis!

Always
YOUR HOMETOWN BANK



 **UnitedBank**

NMLS# 413054 • Equal Housing Lender 

LOCATIONS

505 S. Hill St.

1340 W. Taylor St.

1500 W. McIntosh Rd.

(770) 567-7211

www.accessunited.com

accessunited.com

The GRIFFIN DAILY NEWS

www.griffindailynews.com

SUBSCRIBE TODAY!
Call 470-771-4738

**Print & Digital
Subscription
Bundle**

**SUPPORT
Local NEWS
& BUSINESSES!**

EDITORIAL STAFF

KAREN GUNNELS, MANAGING EDITOR
KAREN@GRIFFINDAILYNEWS.COM • 470-771-4744

HORACE SHIVERS, SPORTS EDITOR
HSHIVERS@GRIFFINDAILYNEWS.COM • 470-771-4745

LARRY STANFORD, STAFF REPORTER
LSTANFORD@GRIFFINDAILYNEWS.COM • 470-771-4743

CRYSTAL HOLBERT, MARKETING MANAGER
CHOLBERT@GRIFFINDAILYNEWS.COM • 470-771-4736

- Powerful Reach • Proven Results
- Multi-Media Powerhouse

We have moved!
128 N. Hill St., Griffin, GA 30223



Become a Supporting Member of Main Street Players

Spotlight Circle.....	\$5000 and above
Director's Circle	\$1000 - \$4999
Star Circle	\$500 - \$999
Actor's Circle.....	\$250 - \$499
Ensemble Circle.....	\$100 - \$249
Friend's Circle	\$25 - \$99

To Advertise with us, please call 770-229-9916
or pick up a form in the lobby.



Main Street Players is a non-profit 501 (c) (3) organization. As such, we rely on the overwhelming generosity of our supporters to operate. While our ticket sales provide part of the financial support for our productions, additional dollars and services are needed. Thank you for your support.

Thank you for your consideration.



Griffin-Spalding Art Association, Inc.

The Griffin-Spalding Art Association promotes and encourages the visual arts through art exhibitions, workshops, and art education. Membership is open to both artists and patrons of the arts.

Members have exhibited their work regionally and nationally.

Open painting sessions each week whether you are a seasoned painter or a beginner.

Members have the opportunity to exhibit and sell their artwork at the gallery located on the first floor of the Griffin Regional Welcome Center.

P.O. Box 81 • Griffin, Georgia 30224



Board of Directors

Norma Richardson
President

Donnie Beall
Board Chairman

Marian Sorensen
Secretary

Janice Aiken

Kim Cooper

BJ Hughes

Dan Jennings

Carlee Love

John Parente'

Janet Prothro

*In an effort to keep our theater looking its best,
we ask that you please refrain from bringing anything
other than bottled water into the auditorium.*

Thank You

to our
Box Office ladies
who work so hard.



Shirley Beall



Phyllis Waldrep

Special Thanks

To all our businesses and patrons who
support us throughout the year.

You are our reason for being!



IN LOVING Memory

Denise Prothro Jolly

1952-2024

A Friend and Patron of Main Street Players



Our Supporters for 2024-2025

Friends Circle Up to \$99

Lillie Mae Lumpkin
Bill & Suzy Pattillo
Warren & Carolyn Zatezalo
Ann Imes Corey

Ensemble Circle \$100 - \$249

Ellen Thurston
Toni Frey
Gertrude Landrum
Rick & Wanda Shivers
Gordon & Betty Erickson
Janet Locke Kindred
Clay & Judy Davis
Mike & Candy Davis
Elaine Bell
Betty Jones
Bob & Ann Nelson
Peggy Raiteri
Pete & Marilyn Droegmiller
Paul & Ruthie Foulds
Richard & Linda Kesselring
Tony & Gwen Martin
Michael Shivers

Actor's Circle \$250 - \$499

Drs. Brad & Kay Wideman
Jim & Suzanne Campbell
Fred & Linda Storar
Barbara Dorsey
Harry & Sharon Willard
Jim & Donna McSpadden
Margie King & Lin Thompson
Tony & Marla Gardner
Mr. & Mrs. Lewis Brewer Jr.
Joyce Oetting
Kenneth & Janet Barras
Toni Turner
Dee Witkowski
Chuck & Janet Prothro
Ken Bishop
Jon & Linda Crouch
Charles & Tish Martin

Star Circle \$500 - \$999

Nancy Blake
Rita Whitehead
Chuck & Kathy Taber
Juanda Ponsell
Galloway & Lyndall, Attorneys at Law
Neil & Marian Sorensen
Kevin & Joyce Malone
Hollis & Millie Bankston
James & Linda Fivian
Richard & Eva Schmidler
Ken & Viki Bozeman
Gordon & Elaine Guyett
Alfred & Cathy McClure
Barry & Ann Cooper
Harold & Joyce Key
Gregory Mortensen
Terry & Linda Anderson
Hal & Nadine Cowan
Joe Vargo
Sally Weitzel
Alice & Andrew Blake
Dan & Leslie Jennings
Susan Brigden & Richard Trull

Director's Circle \$1000 - \$4999

Raymond & Diana Smith
Dr. & Mrs. Tom Grayson
Mary Flynn
Carol Carlisle
The Ingram Foundation
Iris City Chiropractic
Dr. Jim & Kathy Gore
Kathy & Niles Bolton

**Thank you so much!
We could not operate with-
out your generous support.**



TRINITY

Methodist Church

Griffin, GA

A brand new start!

The Global Methodist Church has a
new church plant in Griffin.

Join us at our new location,
501 W. Broad Street, Griffin, GA
Sunday School at 9:45 am
Worship at 11:00 am.



Experience joyful worship with us!

501 W. Broad Street
P.O. Box 2148, Griffin, GA 30224

First Baptist Church of Griffin

You are **LOVED**,
and there's nothing you can do about it.

fbcgriffin.org



"Adding life to days, When days can no longer be added to life."



Brightmoor HOSPICE

Locally owned and operated and has served patients and families in Griffin and the surrounding areas for 16 years.

- In their homes
- At assisted living or skilled nursing facilities
- In our state of the art 12 Bed facility

We offer same day admissions and 24 hour personal, on-call support.



Winner of the Pinnacle Customer Experience Award for 3 consecutive years and Best of the Best for four consecutive years.

Ranked in the top 15% in the Nation for customer experience!

3247 Newnan Rd. Griffin, GA 30223 | (770) 467-9930
www.brightmoorhospice.com

Brightmoor Hospice @brightmoorhospice

**WELLS
FARGO**

Advisors

WORRELL
WEALTH MANAGEMENT GROUP
of Wells Fargo Advisors

It is a privilege to support Main Street
Players and we applaud their
contribution to our community.



Eric Worrell, CFP®, CPWA® CEPA®
Managing Director – Investments
Ed Worrell, CFP®
Managing Director – Investments
Kevin Lennon, CFP®
Financial Consultant



The Worrell Wealth Management Group of Wells Fargo Advisors was recognized as 2024 Forbes Best-in-State Wealth Management Teams. 2024 Forbes Best-in-State Wealth Management Teams: Awarded January 2024; Data compiled by SHOOK Research LLC based on the time period from 3/31/2022 – 3/31/23 [Source: Forbes.com]. The Forbes Best-in-State Wealth Management Teams rating algorithm is based on the previous year's industry experience, interviews, compliance records, assets under management, revenue and other criteria by SHOOK Research, LLC. Investment performance is not a criterion. Self-completed survey was used for rating. This rating is not related to the quality of the investment advice and based solely on the disclosed criteria. Fee paid for use of Marketing Materials.

Investment and Insurance Products: • NOT FDIC Insured • NO Bank Guarantee • MAY Lose Value

Wells Fargo Advisors is a trade name used by Wells Fargo Clearing Services, LLC, Member SIPC, a registered broker-dealer and non-bank affiliate of Wells Fargo & Company.
© 2024 Wells Fargo Clearing Services, LLC. PM-02282026-6966030.1.1

**PIEDMONT
BREWERY**
GRIFFIN, GA

Beer Brewed Here!
Food, Cocktails, and Fun
Piedmontbrewerygriffin.com
Restaurant Open
M-Th 11-9 | Fri-Sat 11-10 | S 11-9



GRIFFIN, GA

Joann Ray
Owner

(678)-878-9281

Joannray@yahoo.com

115 S Hill Street

Griffin, GA 30223



Daughters of the American Revolution

Pulaski Chapter, Griffin, Georgia ★ Organized 1893
770-584-7639

Griffin Area
CONCERT ASSOCIATION

2024-2025
SEASON



Bachelors of Broadway
Tuesday, September 17, 2024

"This show breathes new life into vintage classics from the Golden Age of Broadway including *Wicked*, *Phantom of the Opera*, *Hamilton*, and more!"



Forever Simon & Garfunkel
Thursday, November 7, 2024

"A journey through the history of Paul Simon and Art Garfunkel with iconic hits such as 'The Sound of Silence,' 'Bridge Over Troubled Water,' 'Mrs. Robinson,' and more!"



Kate Voss & the Hot Sauce
Thursday, January 16, 2025

From Blues to Rockabilly to Western Swing, from Brenda Lee and Nancy Sinatra to Buddy Holly and Ray Charles, this trio breathes new life into timeless songs of decades past.



The Hall Sisters
Thursday, February 20, 2025

"Their show features heart-rending ballads and instrumentals, fiery folk tunes, and country classics sprinkled with pop."



Good Shot Judy
presents "The Century of Swing"
Thursday, April 3, 2025

With the swinging ensembles of the Big Band Era & Golden Age of 1930s Jazz music, their show "The Century of Swing" features standards like "Fly Me to the Moon," "Feeling Good," and more!"



Open seating only - no reserved seating

For more information call
770-228-3229

or visit www.griffinconcerts.org



CAMELOT
theatre company
Griffin, Georgia • 678-669-2913



Trap

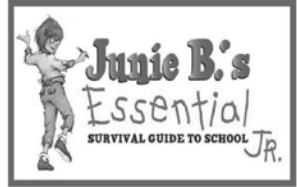
An incomprehensible event: every person in the audience of a high school play falls unconscious—all but one. Using interviews with witnesses, loved ones, first responders, and the investigators pursuing the case, a theatre ensemble brings the story of the strange event to life, documentary-style.

January 31-Feb. 02, 2025

Junie B.'s Essential Survival Guide to School Jr.

Junie B. Jones is back! Based on the bestselling books, the saga of the wisecracking first-grader continues in Junie B.'s Essential Survival Guide to School Jr., a goofy and heartwarming follow-up to Junie B. Jones, The Musical Jr.

April 11-13, 2025



Beetlejuice Jr.

Lydia Deetz is a strange and unusual teenager, still grieving the loss of her mother and obsessed with the whole "being dead thing." Lucky for Lydia, she and her father move to a new house haunted by a recently deceased couple and Beetlejuice, a delightful demon with a real zest for life. When Lydia calls on Beetlejuice to scare away anyone with a pulse, this double-crossing specter shows his true stripes, unleashing a (Nether)world of pandemonium.

September 26-28, 2025

www.camelottheatre.com

Follow us on Facebook/Instagram

GRIFFIN CHORAL ARTS

2024-2025 Season



October 10, 2024 | 7:30 PM
Griffin First United Methodist Church



December 10, 2024 | 7:30 PM
First Baptist Church of Griffin



March 4, 2025 | 7:30 PM
First Baptist Church of Griffin



May 2 & 3, 2025 | 7:30 PM
Griffin Auditorium



ROOKS, WALTZ, JACKSON & ESARY, INC.

Certified Public Accountants & Consultants

Tax Preparation
Tax Planning & Consulting
IRS Representation
Financial Statements
Bookkeeping & Payroll Tax Services



Call Today **(770) 227-5008**

www.rwjecpa.com | 1120 Zebulon Road • Griffin, GA




GALLOWAY & LYNDALL, LLP

NEWTON M. GALLOWAY
ATTORNEY AT LAW

THE LEWIS-MILLS HOUSE
406 NORTH HILL STREET
GRIFFIN, GEORGIA 30223

TELEPHONE (770) 233-6230
FACSIMILE (770) 233-6231
EMAIL NGALLOWAY@GALLYN-LAW.COM



GRIFFIN
BALLET THEATRE

30
SEASONS



GHOSTS

October 25 & 26, 2024



N EXPERIENCE



GRIFFIN
BALLET THEATRE

NOV 29 - 30
DEC 30

The Nutcracker



GRIFFIN
BALLET THEATRE

THE ARMED MAN
— A MASS FOR PEACE —

MAY 2 & 3 2025

WITH THE GRIFFIN BALLET THEATRE
Conductor: Dr. Michael Cooney & Nancy S. Berman
& LIVE
A PROFESSIONAL ORCHESTRA
Barbara Robinson | 770.227.0750 | www.griffinballet.com

ARTISTIC FLOWERS
Floral, Gifts, Weddings & Events



Wayne English
Designer/Event Planner

610 W. SOLOMON ST.
GRIFFIN, GA 30223
artisticflowersga.com

☎ 770.228.6300
✉ wayne@artisticflowersga.com



*Specializing in weddings and events, everyday floral arrangements,
unique gifts, and interior and exterior designs.*



Blackshear Photography

Rick Blackshear

118 North Hill Street
Griffin, GA 30223

Phone 770-227-0750
Fx 770-216-1851

e-mail: rick@blackshear.com
blackshearphotography.com

Kevin M. Kirkland
D.M.D., P.C.
Family Dentistry



770-227-8020

675 South 8th Street

Griffin, Georgia 30224

Welcoming New Patients



101 N. Hill Street
Griffin, GA 30223

(678) 572-4222

Fax (678) 572-4681

Law Office of G. Alan Dodson, LLC



100 South Hill Street,
Suite 405
Griffin, Georgia 30223

(770) 228-2148

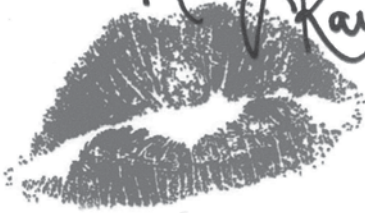
info@alاندodsonlaw.com

Wills, Trusts, & Probate
Estate Planning

Guardianships & Conservatorships
Trust & Estate Administration

Business Succession Planning
Trust & Estate Litigation

Mary Kay



it just fits!

Discover how Mary Kay fits into your lifestyle!

Susie Blackshear 770-584-7639
marykay.com/sblackshear

Dorothy Murray



Cell, Home, Studio, Text:
770-468-2989

Griffin, Georgia

e-mail: Dotnote@aol.com

First Presbyterian
CHURCH OF GRIFFIN

Worship With Us
SUNDAYS 11AM

1349 Macon Road
Griffin, GA 30224

www.fpcgriffin.org

OUR MISSION

to invite hungry people
to be filled with joy
in Christ Jesus



ARCUS
C P A

Our mission is to provide a service so considerate, impactful and tailored to our client's needs they will always think: "I trust these people."

We aim to serve business owners who are:

- Proactive, forward looking
- Seeking a year-round relationship; not just a tax return
- Comfortable with cloud-based applications



Curtis Hardwick, Founder



Scan the QR code to visit our website to learn more about our services.



Rita C. Johnson Ins Agency Inc

1522 Lucky Street
Griffin, GA 30223-1257

Bus 770-228-6164 Fax 770-467-9677

rita.johnson.nl65@statefarm.com

www.ritajohnson.net



Rita C. Johnson, Agent

The greatest compliment you can give is a referral.




COOPER
SHEETMETAL & GUTTER

RESIDENTIAL & COMMERCIAL
Seamless Gutter • Custom Gutters • Gutter Guards • Fascia • Soffit

678-249-8235



SHARPS
Jewelers

Ethan Blount

1012 Memorial Drive Suite #1
Griffin, Georgia 30223

sales@sharpsjewelers.com

770-227-2595 Voice



David's Drug & Surgical Shop

315 South Eighth Street
Griffin, Georgia 30224
770-227-6338
770-229-2571 (Fax)

DAVID E. CLEMENTS, Rph Owner
After Hours
770-227-0164
davidsdrug@aol.com

Computerized Pharmacy
Complete Home Health Supplies
Respiratory Therapy
Fast, Friendly Service

Southern Classic
REALTORS®

Gayle Brittingham
REALTOR

678.791.3316
678.635.8877
gbrittingham@gmail.com



GRIFFIN-SPALDING
HISTORICAL SOCIETY
& BAILEY-TEBAULT HOUSE

633 Meriwether Street
P.O. Box 196
Griffin, Georgia 30224
770-229-2432

gshs196@gmail.com
www.griffinhistory.com



Kirby Sisk
Owner • Operator

132 East College Street
Griffin, Georgia 30224

www.thebellhousegriffin.com
kirbysisk@thebellhousegriffin.com

678-688-4442



Wynn's Pharmacy

566 South 8th Street
Griffin, GA 30224
Phone: 770-227-9432

wynnspharmacy@gmail.com



Proud supporter of the arts in Griffin!



BETSILL REMODELING

770-584-1038

BONNIE BETSILL

OWNER

Roofing, Siding and Windows

Betsillremodelling@aol.com

BLASINGAME
PEST MANAGEMENT, INC.

Billy Blasingame
Owner/CEO
Associate Certified Entomologist
bbblasingame@blasingamepest.com
(770) 914 1036
BlasingamePest.com

FAMILY
OWNED & OPERATED
SINCE 1981



Little Caesars

J. Henry's

RESTAURANT

110 West College Street
Griffin, Georgia 30224

678-688-1769 ♦ Fax: 678-688-1588



BRAD GLASS

GLASS TERMITE & PEST, INC

770-229-2211

Griffin, Georgia

232 Airport Road
P. O. Box 16
Griffin, GA 30224

Cell 678-988-7704
brad@glasstermiteandpest.com

Jan's Used Furniture



Jan and Jim Rice
Owners

433 W. Solomon Street
Griffin, GA 30223
(770) 412-9805

**Town & Country
Flower Shop, Inc.**

♥ Serving You Since 1974 ♥

1528 Industrial Dr. ♥ Griffin, Georgia 30224
(770) 228-2217
www.townandcountryflowershop.com

Keri Johnston
678-937-6684

*Health Haven
Infusion Therapy LLC*
LIVE TO THRIVE

EZ Roller Enterprises, LLC
706-975-4147 • Alex Johnston

4586 Hwy 36 • TheRock, GA 30285

If you have not been receiving emails or postal mailings, please help us out by updating your current information.

Name _____

Email _____

Address _____

City _____ State _____ Zip _____

Please print legibly

Coming in February

I DO! I DO!



**by Tom Jones
Harvey Schmidt**

February 12-23, 2025

Performances: Wednesday-Saturday, 7:30pm & Sundays 3:00pm

Box Office 770-229-9916

115 North Hill St. Griffin, GA. 30223



"I Do! I Do!" is produced by special arrangement with Musical Theatre International.

Thanks to Our Volunteers





BECK, OWEN & MURRAY

ATTORNEYS AT LAW

Serving All Your Legal Needs Since 1888

Stephanie W. Windham

Janice M. Wallace

Karl P. Broder

AV Preeminent®

Marindale-Hubbell®

Peer Review Rating™

Associates:

David E. Penland

Nathan R. Greene

William M. Dallas III

Emeritus

Our mission is to provide personalized, comprehensive legal representation to our clients, guiding them through their legal challenges with integrity, expertise, and dedication.

www.beckowen.com

770-227-4000

One Griffin Center

100 S. Hill Street, Suite 600, Griffin, GA 30223